

Thorold Fire and Emergency Services



Headquarters Review

Front of Station 1

- Headquarters in downtown core
- Distressing public perception of city infrastructure
- Negative reflection of the fire service



South Wall Exterior



Sinking Sidewalk



Store room falling away from building

South Side



Store room falling away from building

North Side



Fire Escape



Roof

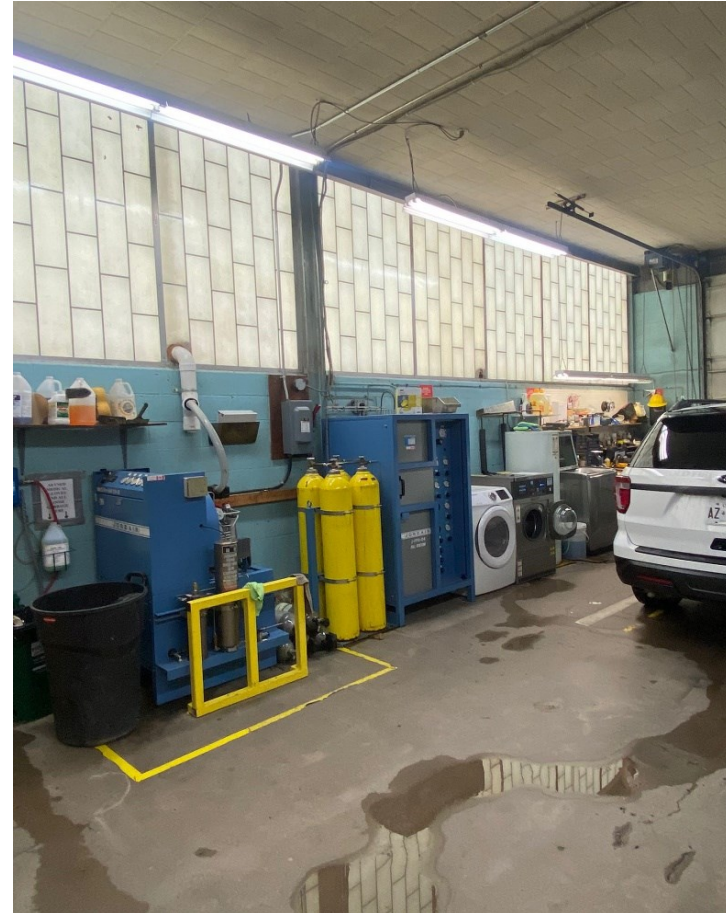


Pump 1 Bay

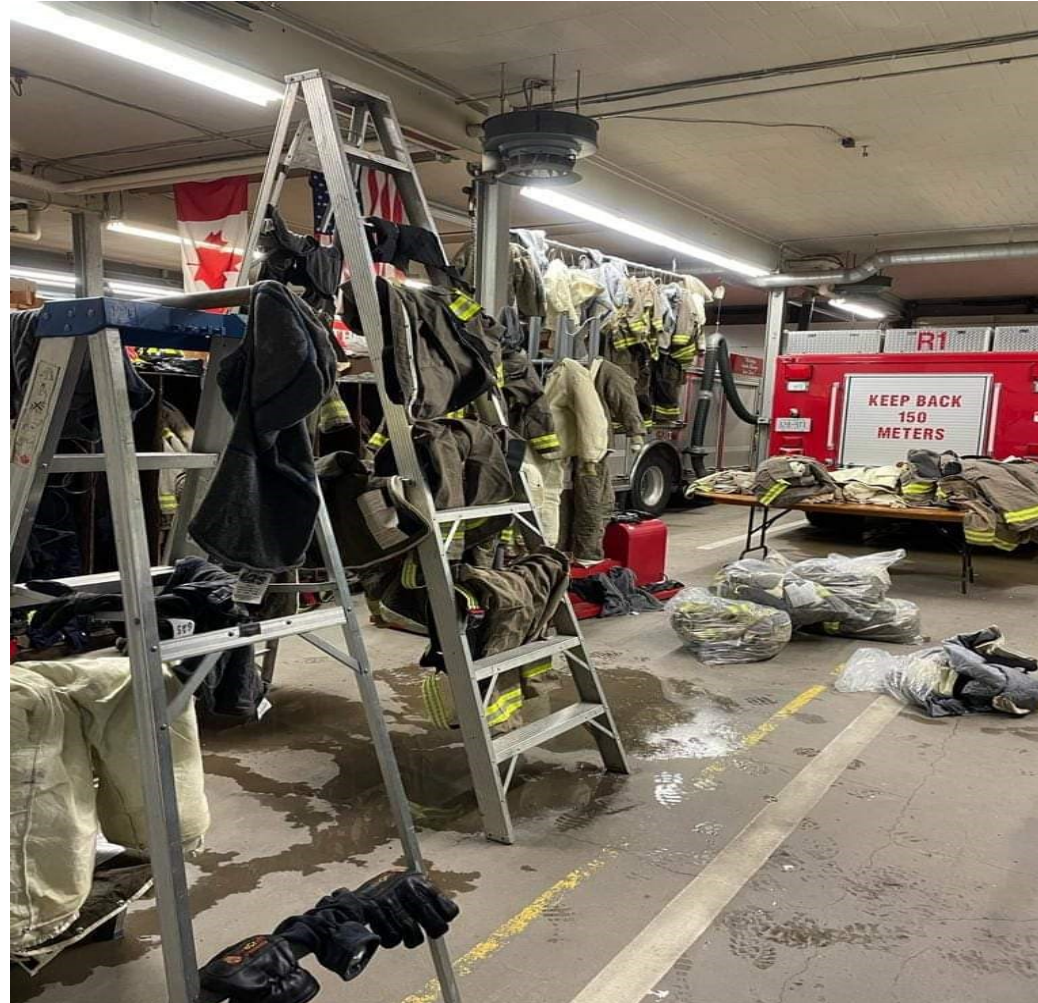


North Wall

-Station bursting at the seams....



Gear Cleaning and Drying



Offices

Asbestos in FPO Office



Captain's Office



Storage



Storage

- Lockers in old shower in bathroom



Storage



IT Closet



Boiler



Asbestos



Asbestos



Decontamination and Mask Wash Sink



Existing Station One to Merritt Meadows

13 minute response time to
largest growth area of the city
this area will triple.

178 Calls to this district in the
last 12 months

