



# Thorold MOC Addition & Renovations

Overview for City Council on December 7, 2021

**Presented by**

Laurence Cudlip, OAA LEED AP | Partner  
December 7, 2021

04

# Background & Design Sequence

Information



Existing Site  
1543 Beaverdams Road,  
City of Thorold's Public Works Building



Google Earth

CIMX+

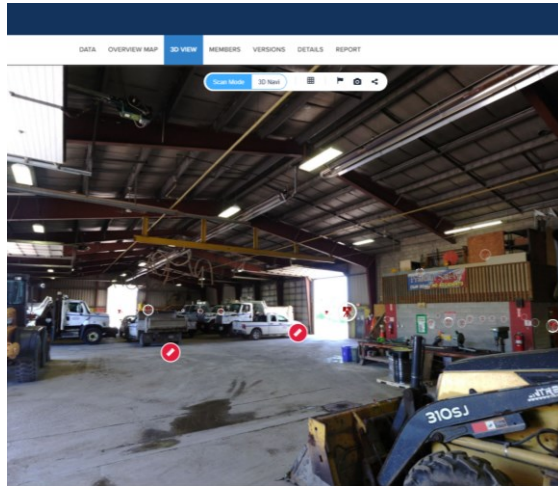


# Site Photos

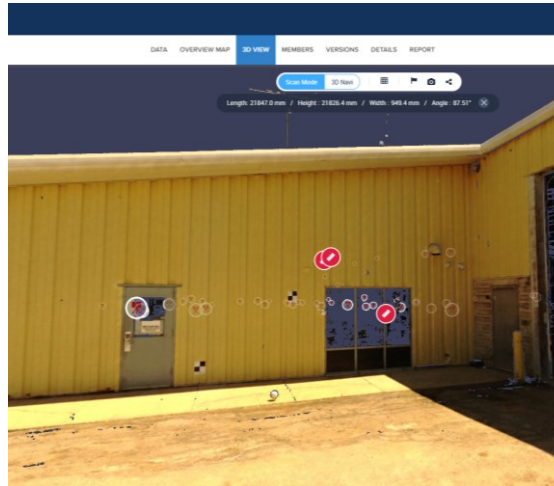
## Existing Conditions



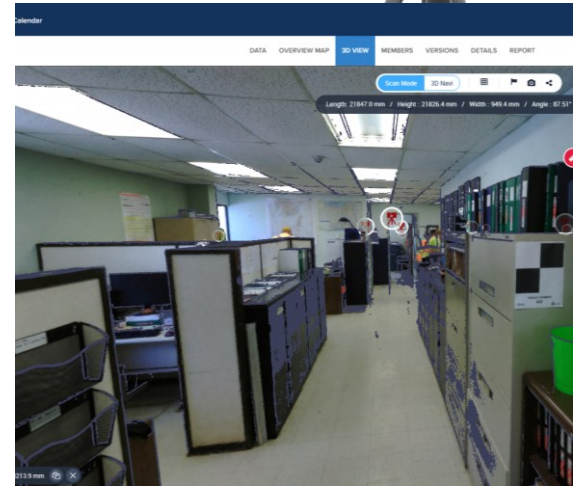
# Existing MOC Point Cloud Scanning



Garage



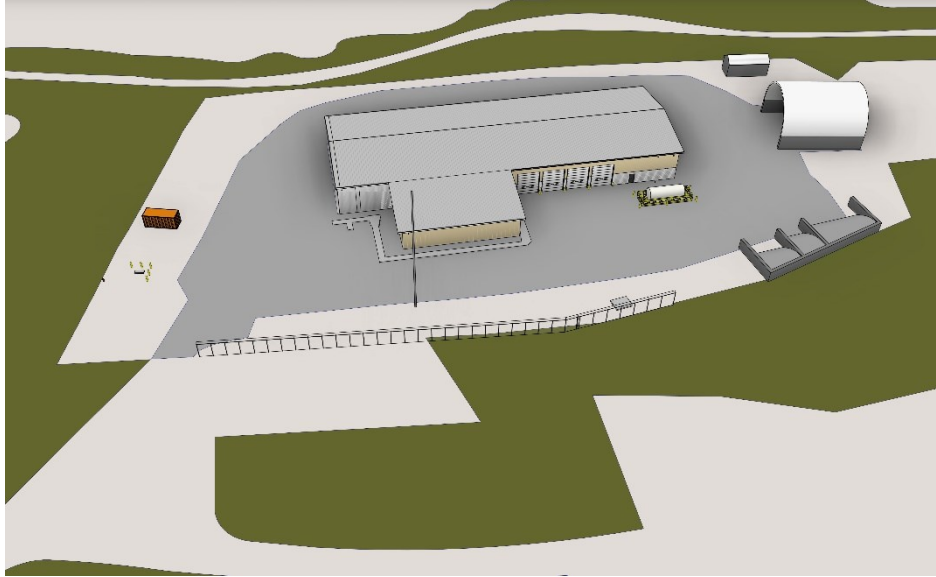
Property and Exterior of Building



Interior Office Space

# Site Photos

## Existing Site Conditions



## Existing MOC Site Conditions

Building GFP = 1856.2m<sup>2</sup>  
Unpaved Parking = approx. 30 spaces



## MOC Addition and Facility Enhancement

Building GFP = 2444.4m<sup>2</sup>  
Asphalt Parking = 80 spaces

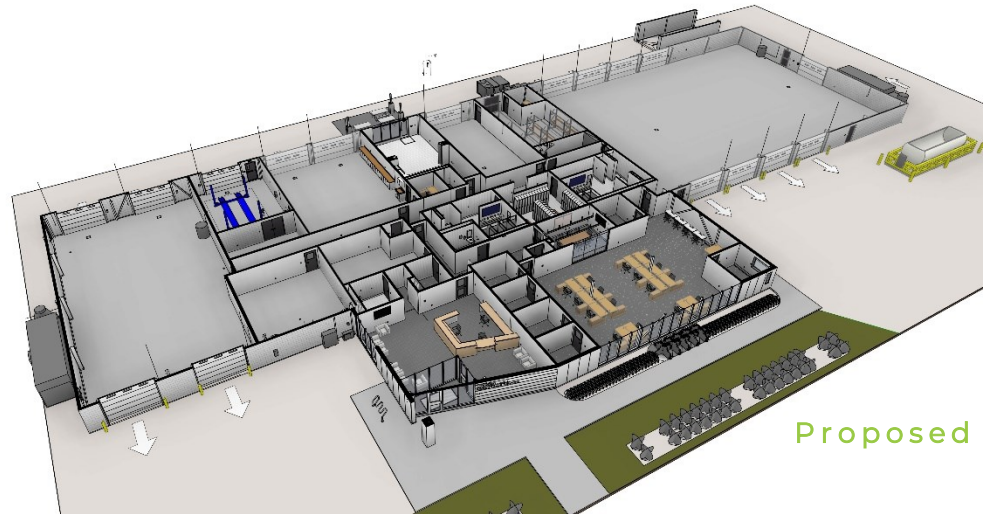


## Features

New Sidewalk Area = 187m<sup>2</sup>  
New Landscape Restoration Area = 2550m<sup>2</sup>  
New Asphalt Area = 5475m<sup>2</sup>  
New Chainlink Fence = 180m

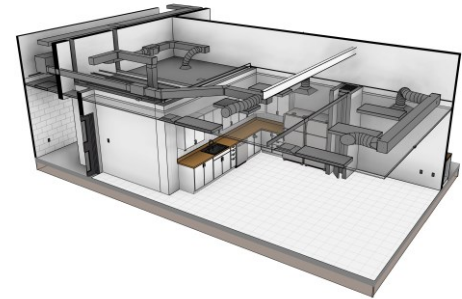
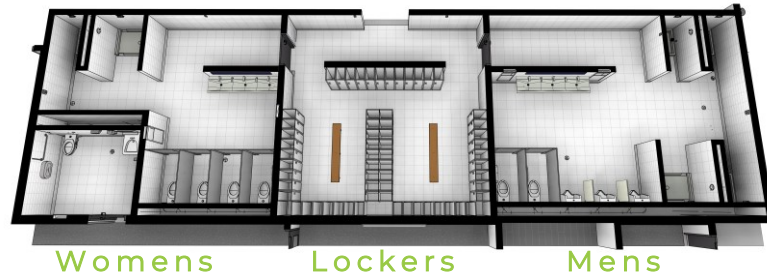
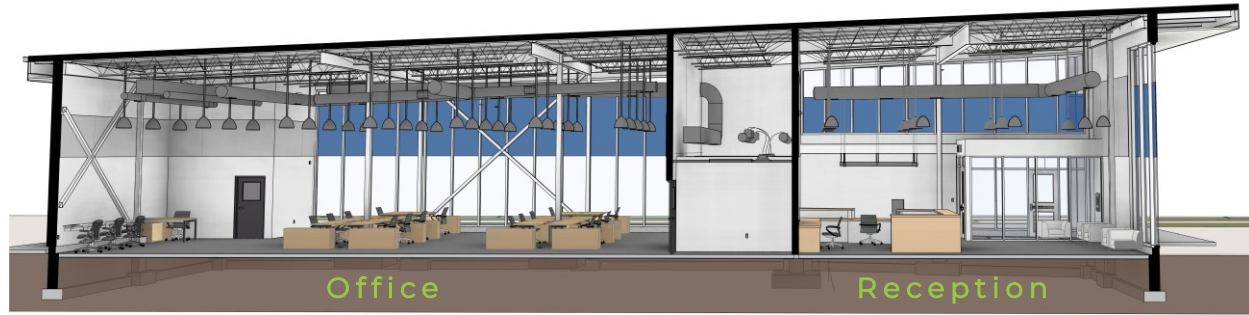


**CLM+** Excellence in engineering





# Building Sections



# Building Elevations



# Visualizations

MOC Public Entrance



MOC Lobby & Reception



MOC Office Addition







Laurence Cudlip, OAA LEED AP

[Laurence.cudlip@cima.ca](mailto:Laurence.cudlip@cima.ca)

C 906 431-0364

415 Baseline Rd W, Suite 200, Bowmanville, ON L1C 5M2