

The Corporation of the City of Thorold

By-law No. 129-2021

Being a by-law to Stop-Up and Close a Road Allowance in the OPG Reservoir

Whereas Section 27(1) of the Municipal Act, 2001, S.O. 2001, Chap. 25, provides that a municipality may pass by-laws in respect of a highway only if it has jurisdiction over the highway; and

Whereas Section 30 of the said Act provides in part that a highway is owned by the municipality that has jurisdiction over it; and

Whereas Section 34(1) of the said Act provides a by-law permanently closing a highway does not take effect until a certified copy of the by-law is registered in the proper land registry office; and

Whereas By-Law 48-2012 establishes procedures to provide notice to the public; and

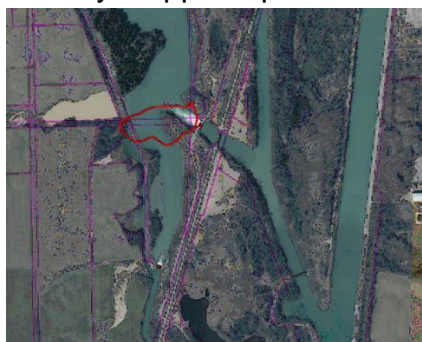
Whereas Council deems it expedient to waive By-Law 48-2012 as the subject portion of the original road allowance is under-water and forms part of the OPG's reservoir; and

Whereas notice of intention of the Council of the City of Thorold to consider a by-law to stop-up and close has been waived; and

Whereas it is deemed advisable to stop up and close PIN 64055-0524R, a road allowance that is under water and forms part of the OPG's reservoir and forms a part of road allowance between Township Lots 74 and 97 and Part of the road allowance between Township Lots 75 and 98, Designated as Part 20, Plan 30R-12010,

Now therefore be it resolved that the Council of The Corporation of the City of Thorold hereby enacts as follows:

1. THAT PIN 64055-0524R, a road allowance that is under water and forms part of the OPG's reservoir and forms a part of road allowance between Township Lots 74 and 97 and Part of the road allowance between Township Lots 75 and 98, Designated as Part 20, Plan 30R-12010 be hereby stopped up and closed; and



2. THAT this By-law shall be forthwith registered in the proper Land Registry Office.

Read a first, second and third time and finally passed by Council this 7th day of December, 2021.

Terry Ugolini, Mayor

Joanne Hyde, City Clerk