



# HOSPICE NIAGARA

**Make Hospice a *home*** 



HELP...Make Hospice a *home*



TIME  
*together ...*

**Welland firefighter,  
Captain Craig 'Opie' Bowman  
dedicated his life to serving and  
protecting the community he loved.**

**HOSPICE NIAGARA**  
helping you live well

HELP...Make Hospice a *home*

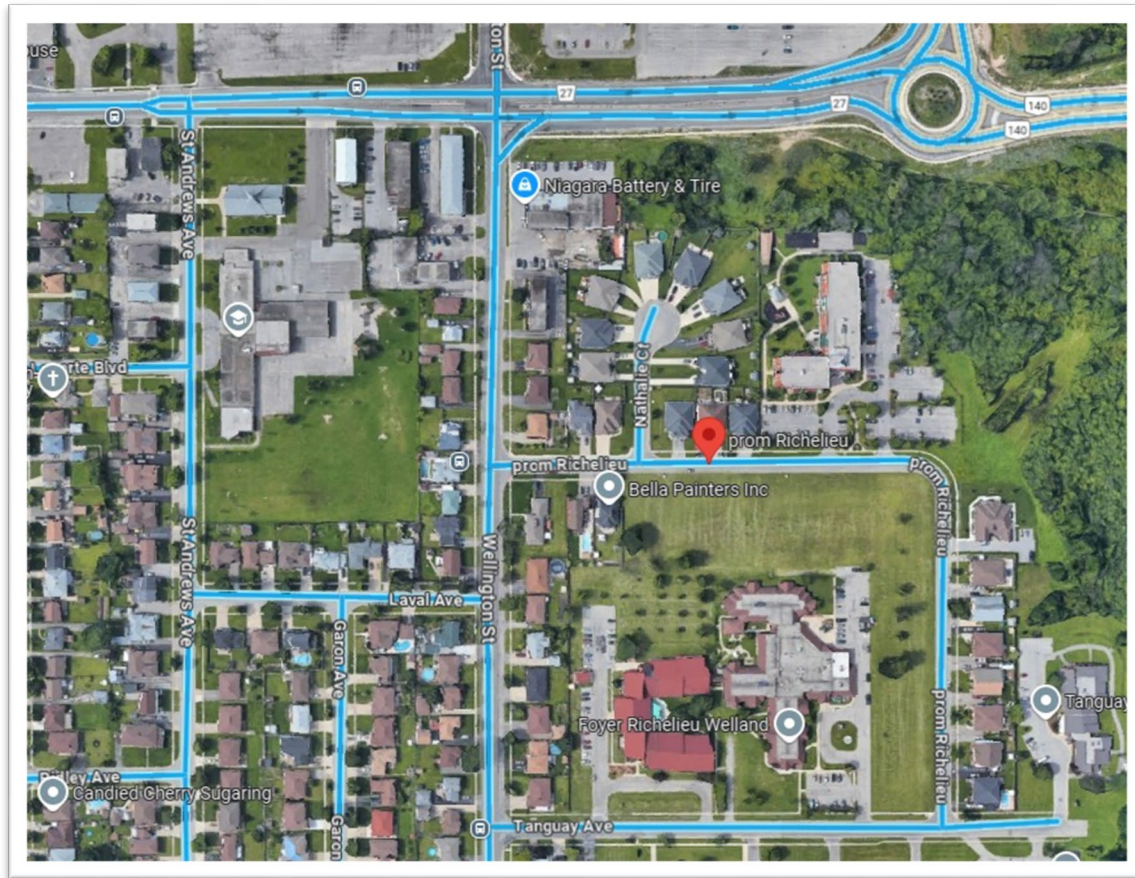


*Walker House*  
**WELLAND**

**COMING SOON**

**HOSPICE NIAGARA**  
helping you live well

HELP...Make Hospice a *home*



LOCATION

*Promenade*  
RICHELIEU, WELLAND

HOSPICE NIAGARA  
helping you live well

# HELP...Make Hospice a *home*



WELLAND  
**Residence Suite**  
Chambre



WELLAND  
**Family Changeroom/Shower**  
Vestiaire/douche pour les familles

# HELP...Make Hospice a *home*



WELLAND  
**Spa/Tub Room**  
Salle des petits soins/baignoire



WELLAND  
**Family Dining/Living Room**  
Salle à manger/salon pour les familles



# HOME IS WHERE YOU FIND...

WELCOME

WARMTH

TOGETHERNESS

SAFETY

PEACE OF MIND

KINDNESS

COMFORT

FRESH AIR

COMPASSION

# PROGRAMS and SERVICES



*living well at* HOSPICE

Care, compassion and dignity for people at end of life and their families.



*living well at* HOME

Support for people throughout their illness, improving quality of life and well-being.



*living well with* GRIEF

Children, youth and adults explore feelings of grief and loss, in a safe and supportive space.

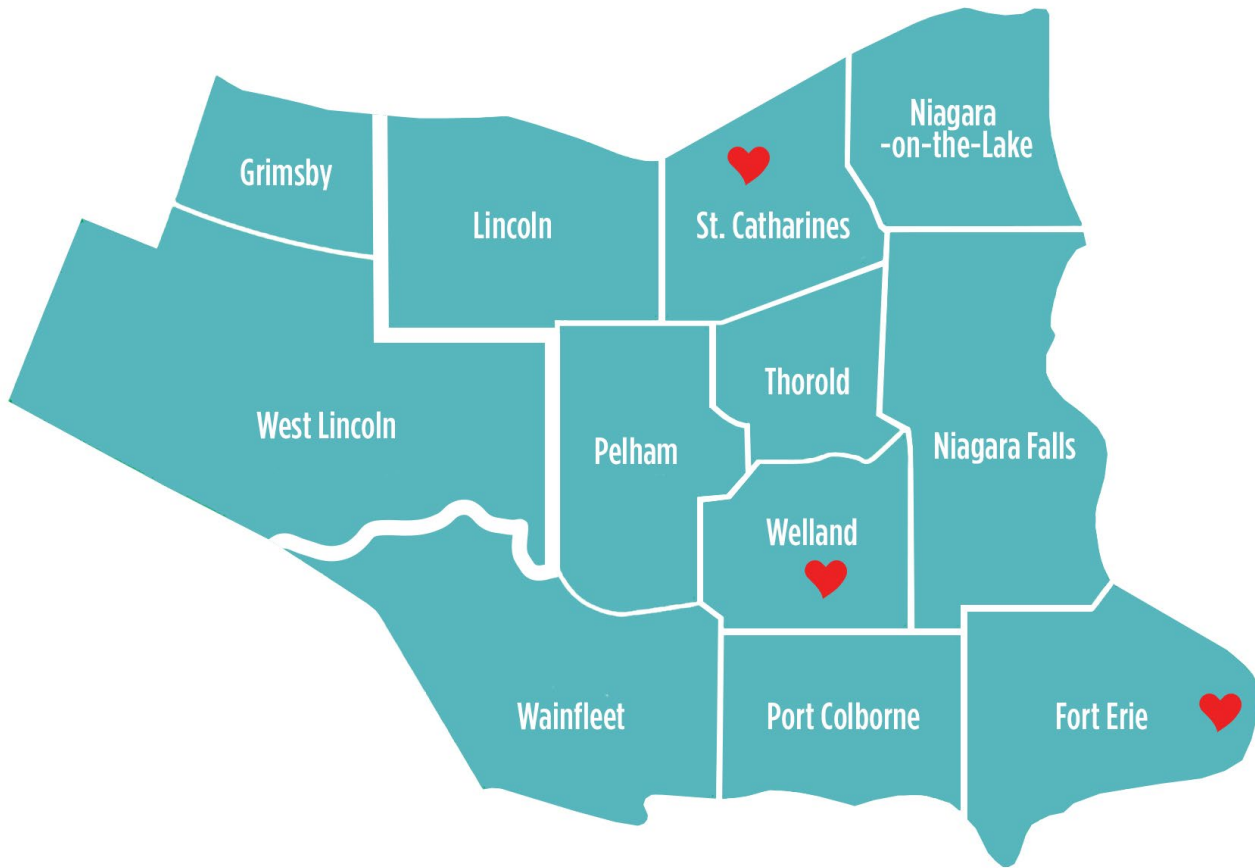


*living well as a* CAREGIVER

Family caregivers learn healthy ways to cope and care for themselves, as they care for others.



# EXPANDING ACROSS NIAGARA



Only a  
**20-30min drive**  
from anywhere  
in Niagara.

Hospice is  
**Closer to Home**  
**FOR EVERYONE**



**DONATE NOW TO**  
*Walker House*  
**WELLAND**  
**[www.wellandhospice.ca](http://www.wellandhospice.ca)**

