

(BY BY-LAW No. 1770, INSTRUMENT No. B1102)  
 CANAL STREET BY REGISTERED PLAN No. 890  
 (ORMOND STREET BY REGISTERED PLAN No. 891)  
 (PUBLIC TRAVELLED ROAD, 20.12 MIDE)

PIN 64050-0001(LT)  
 ORMOND STREET SOUTH

PIN 64050-0001(LT)

LOT 1, EAST SIDE  
 OF ORMOND STREET

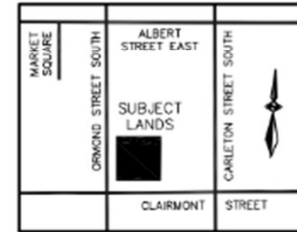
PIN 64050-0255(LT)

EXISTING RESIDENTIAL

LOT 1, WEST SIDE OF  
 CARLETON STREET

PIN 64050-0268(LT)

PRELIMINARY SKETCH TO ACCOMPANY AN  
 APPLICATION UNDER THE PLANNING ACT  
**LOTS 3 & 4 ON THE  
 NORTH SIDE OF CLAIRMONT STREET**  
 REG'D PLANS No's 890 & 891  
 CITY OF THOROLD  
 REGIONAL MUNICIPALITY OF NIAGARA



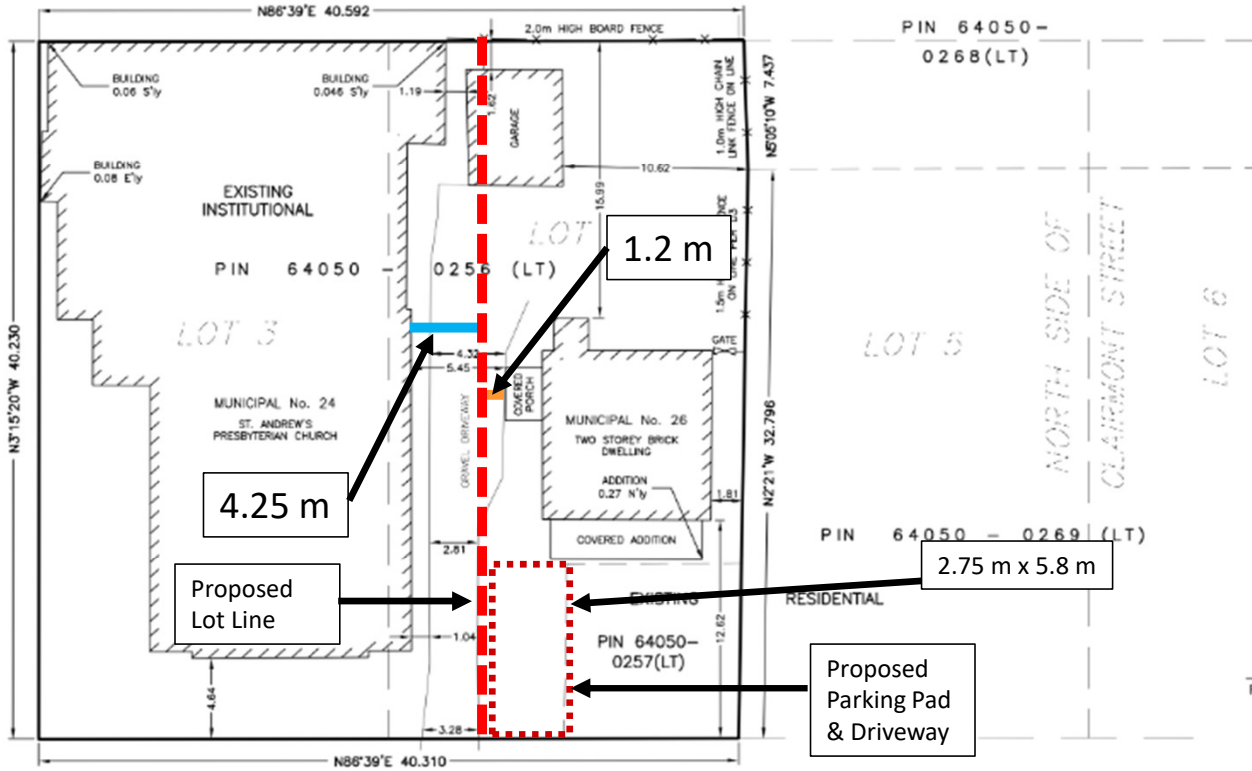
KEY PLAN  
 NOT TO SCALE



O.L.S.

FEBRUARY 20, 2024 BRENT LAROCQUE

**RICHARD LAROCQUE LIMITED**  
 ONTARIO LAND SURVEYORS & CONSULTANTS  
 12 LYMAN STREET, ST. CATHARINES, ONTARIO  
 905-688-1413  
 6385 COLBORNE STREET, NIAGARA FALLS, ONTARIO  
 905-358-8400  
[www.larocquegroup.ca](http://www.larocquegroup.ca)



PIN 64050-0250(LT) **CLAIRMONT STREET**

(BY REGISTERED PLAN No. 898)  
 (PUBLIC TRAVELLED ROAD, 20.12 MIDE)

THIS SKETCH IS PREPARED FOR AN  
 APPLICATION UNDER THE PLANNING ACT  
 AND ALL DIMENSIONS ARE TO BE CONFIRMED  
 BY SURVEY.

NOTE: THE LOT DIMENSIONS ILLUSTRATED  
 HEREON WERE OBTAINED FROM PLANS AND  
 DOCUMENTS ON FILE AT THE LAND REGISTRY  
 OFFICE

METRIC NOTE DISTANCES SHOWN ON THIS  
 PLAN ARE IN METRES AND CAN BE CONVERTED TO  
 FEET BY DIVIDING BY 0.3048.

© RICHARD LAROCQUE LIMITED  
 No person may copy, reproduce or alter this  
 plan in whole or in part without the written  
 permission of RICHARD LAROCQUE LIMITED

DRAWN BY:  
 D.B.

CHECKED BY:  
 B.L.

DATE:  
 FEB. 20, 2024

FILE:  
 NS2023-031  
 DWG. FILE: NS2023-031-02